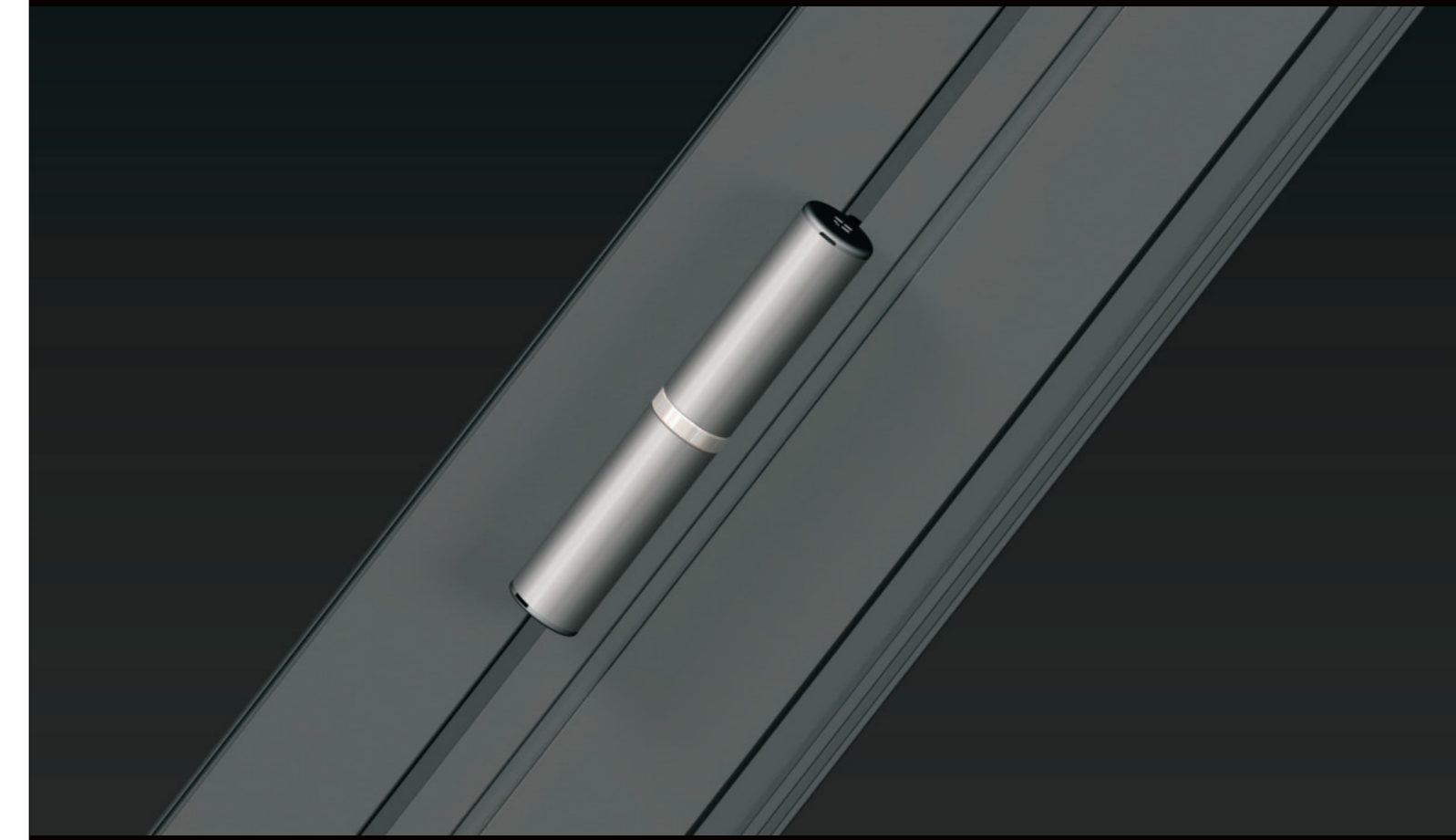


Code	Description	Pieces per pack
LINEA 3D HINGE		
00568190	LINEA 3D HINGE Euro Groove - frame 14-18	20
00569190	LINEA 3D HINGE NC International	20
00571190	LINEA 3D HINGE R40	20
00572190	LINEA 3D HINGE R50	20
00573190	LINEA 3D HINGE Euro groove - outward opening	20
00574190	LINEA 3D HINGE NC International - outward opening	20
00575190	LINEA 3D HINGE Alu 16	20

LINEA 3D COVER		
00589...	LINEA 3D HINGE COVER Couple	20

BLOCK FOR ADJUSTMENT IN HEIGHT		
00570190	HEIGHT ADJUSTMENT BLOCK C.E.-NCInt.-R40	10
00576190	HEIGHT ADJUSTMENT BLOCK Alu 16	10
00580190	HEIGHT ADJUSTMENT BLOCK R50	10

GIESSE LINEA 3D
The latest generation of clamp-fixed hinge



Linea 3D is the latest generation of Giesse clamp-fixed hinge for door profiles with groove, adjustable in three directions, capable of maintaining the hinge bodies perfectly aligned at all times irrespective of the side adjustment position.

Top aesthetic effect for a clamp-fixed hinge, developed for demanding customers seeking unique application solutions.

The revolutionary **Linea 3D system (Giesse patent)** makes it possible to perform side adjustment simply and effortlessly, using exclusively the adjuster screw on the wing hinge, thus avoiding the unsightly misalignment of hinge bodies typically found with conventional hinges.

The covers supplied with the product, which can be painted or anodised in accordance with requirements, make it possible to customize the hinge and obtain precisely the required finish.

Perfect anchorage of the hinge to the profile is achieved by means of special steel fixing plates that engage with both sides of the groove, and supplementary reinforcing screws on the frame side plate.

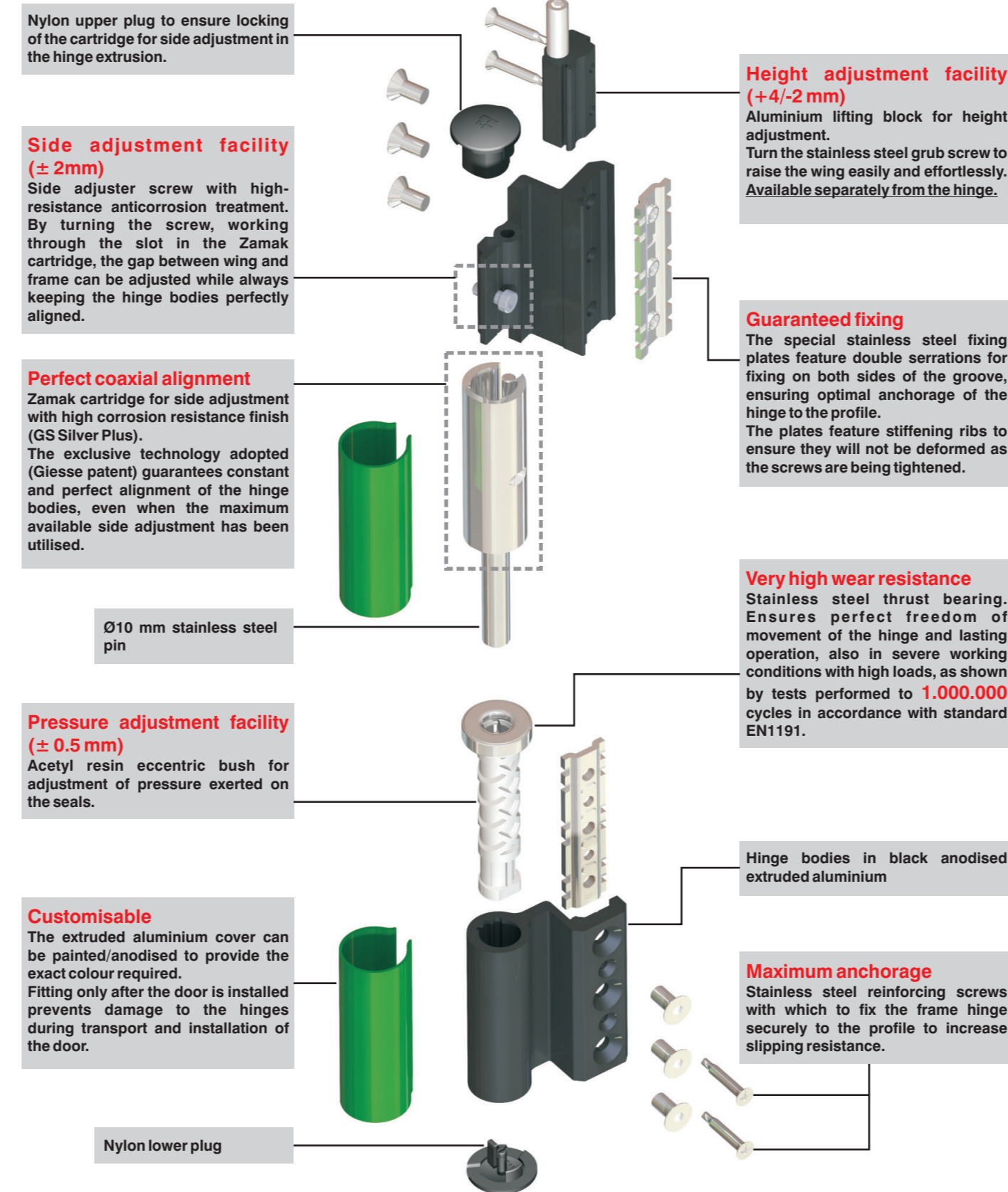
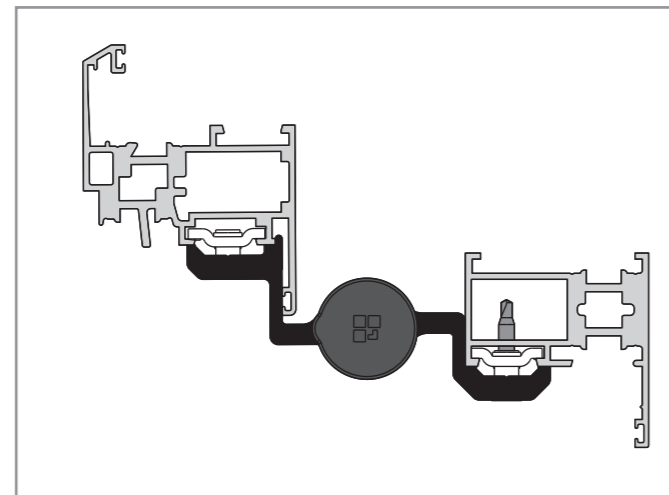
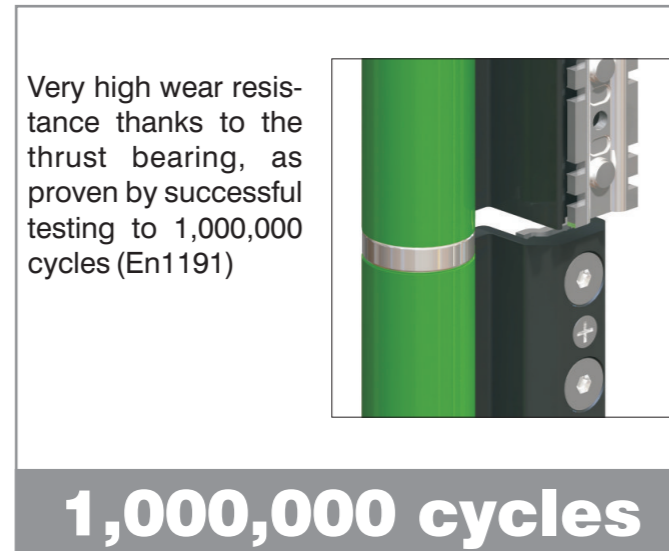
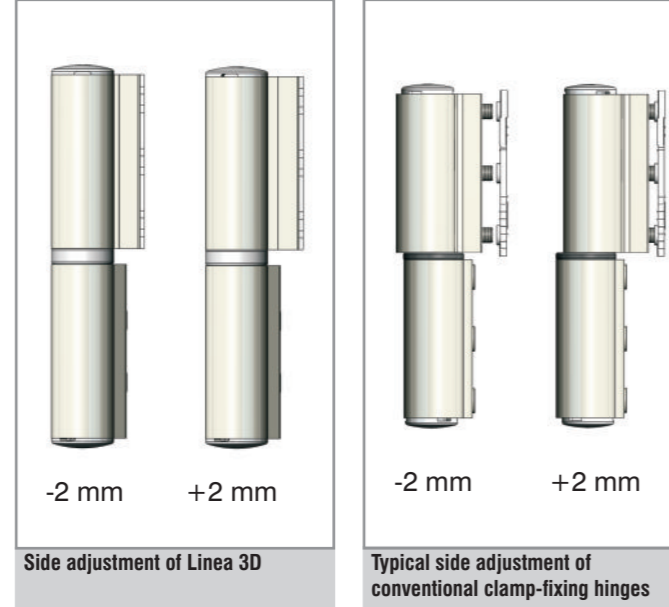
Linea 3D offers unique performance in its class. Included in **class 13** in compliance with EN1935, load capacity is **120 kg** with 2 hinges, and **150 kg** with 3 hinges.

Linea 3D has been tested to **1,000,000** cycles in compliance with EN1191, which certifies a standard door.

Fixing to the profile is simple and rapid, without requiring any machining.

Linea 3D is the ideal solution for manufacturers wishing to make heavy doors, combining high performance, fast installation, and good looks.

GIESSE awards the maximum importance to the ability to adapt its products to the needs of its systems engineering and door manufacturer customers all over the world. That's why the **Linea 3D** hinge can be made for each of the customers' lines, making specific extruded components and the relative fixing plates.



3-D ADJUSTMENT

Linea 3D can be easily and rapidly adjusted in three directions when the wing is already installed.

Side adjustment (± 2 mm)

Turn the adjuster screw located in the Zamak cartridge to adjust the gap between wing and frame easily and effortlessly, keeping the hinge bodies aligned at all times.

Pressure adjustment (± 0.5 mm)

Performed using wrench 03259N to turn the eccentric bush in the frame side hinge.

Height adjustment ($+4/-2$ mm)

Height adjustment is facilitated by using the special lifting block (supplied separately from the hinge), which is inserted in the position of the wing side of the upper hinge.

By slightly loosening the screws of the wing profile fixing plate and turning the stainless steel grub screw, the wing lifts easily and effortlessly with respect to the hinge, while maintaining the hinge bodies always in contact with the thrust bearings.

If the lifting block is not used, the hinge height can be adjusted in the conventional manner by loosening the fixing screws and causing the hinge to slide in the profile groove.

