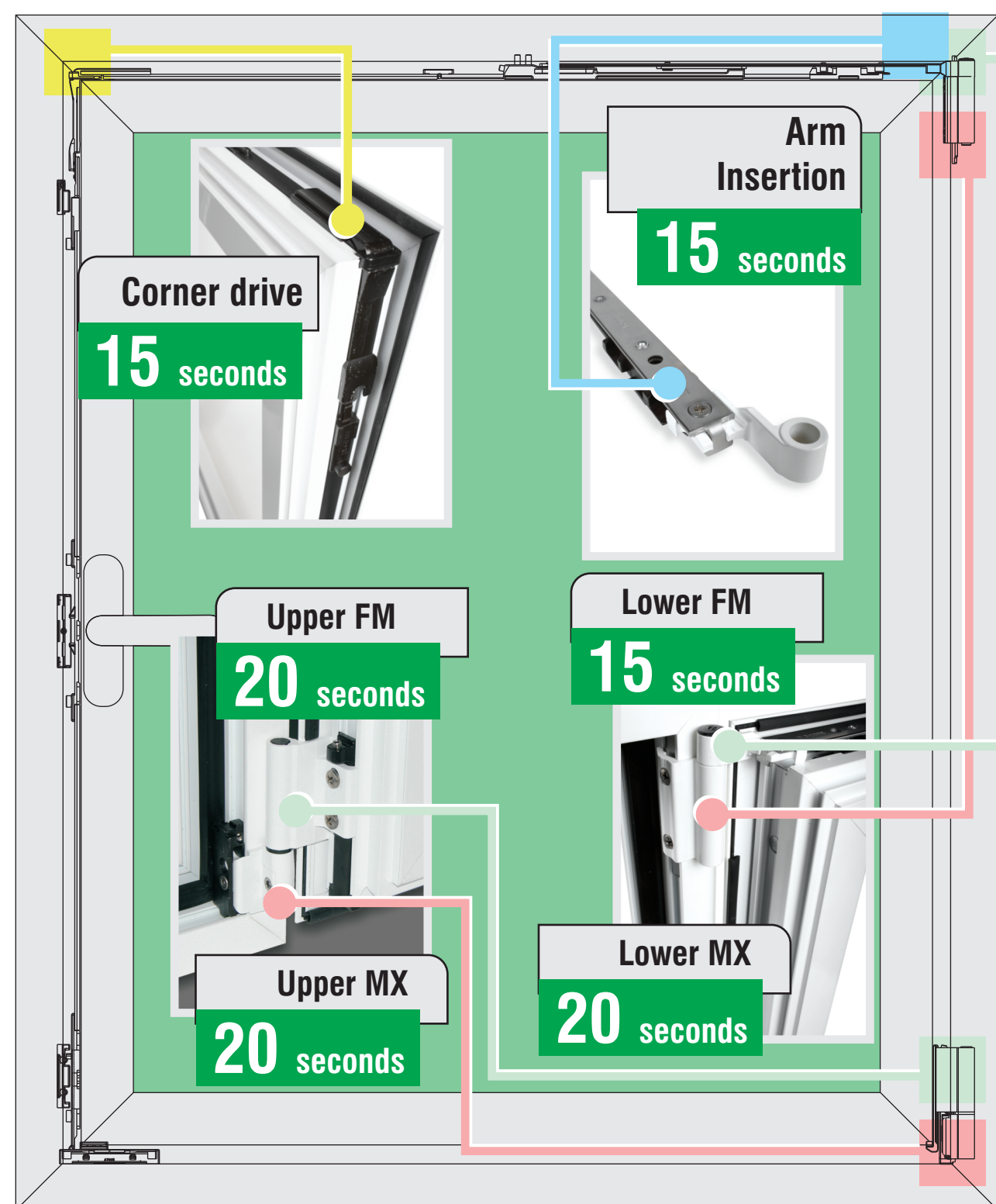
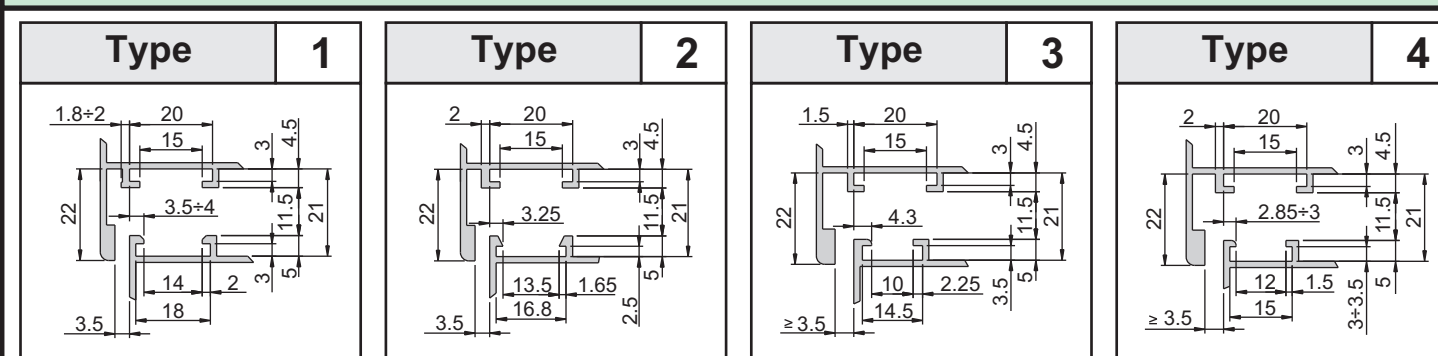


Easy assembly:
Assemble **GIESSE Tilt-and-Turn**
in less than **5 minutes.**



Before starting



Lubricate the guides and all mechanisms with Vaseline-based lubricant before insertion.
Use **GIESSE untreated and unpainted polyamide connecting rods or aluminium connecting rods**. Carry out all machining operations on the mobile wing, as specified in point 2. The accessory described in these instructions will operate correctly only if the window has been installed flush and clear of obstacles that obstruct total wing opening (180°). If this is not possible, use opening limiter elements such as the **GIESSE FRIZ Arm** (art. 02030).

Possible Dimensions and Capacities

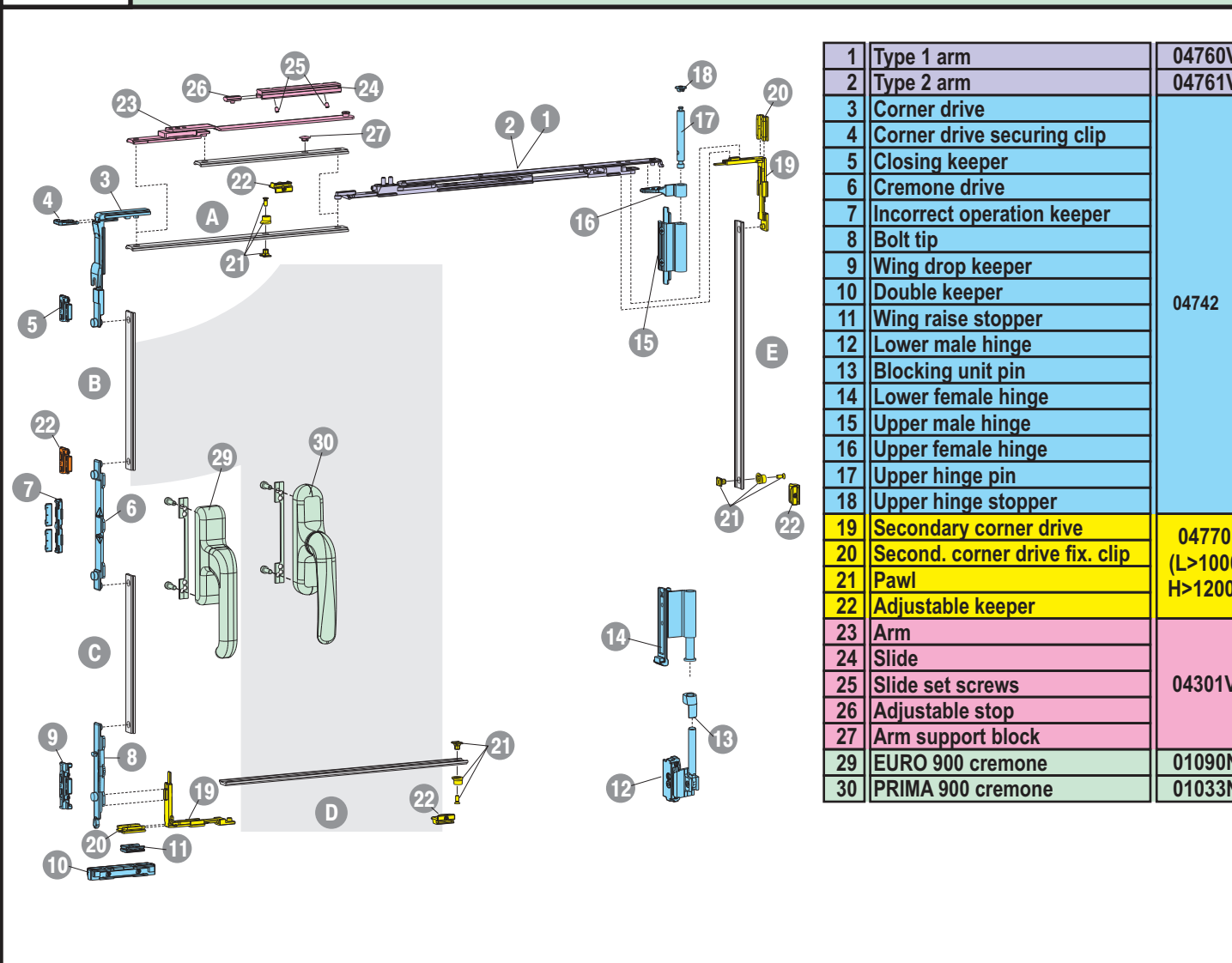
CAUTION: These load capacities are guaranteed if there are no obstacles preventing wing movement which force the hinges excessively (such as protrusions, stoppers or other stop elements). In this case, you must use a **FRIZ limiter arm**, art. 02030.

Maximum wing weight (aluminium and glass): 100 kg
Maximum glass thickness (excluding air space) (in mm):

Wing height (mm)	Wing width (mm)																	
	2500	2400	2300	2200	2100	2000	1900	1800	1700	1600	1500	1400	1300	1200	1100	1000	900	800
42	42	35	29	25	22	19	17	16	14	13	12	11	10	10	10	10	10	10
37	37	30	26	22	20	18	16	15	14	13	12	11	10	10	10	10	10	10
32	32	28	24	21	19	17	16	15	14	13	12	11	10	10	10	10	10	10
27	27	24	21	19	17	16	14	13	12	11	10	10	10	10	10	10	10	10
22	22	20	18	16	15	14	13	12	11	10	10	10	10	10	10	10	10	10
17	17	16	14	13	12	11	10	10	10	10	10	10	10	10	10	10	10	10
12	12	11	10	10	10	10	10	10	10	10	10	10	10	10	10	10	10	10
7	7	7	7	7	7	7	7	7	7	7	7	7	7	7	7	7	7	7

Not possible [shaded box]

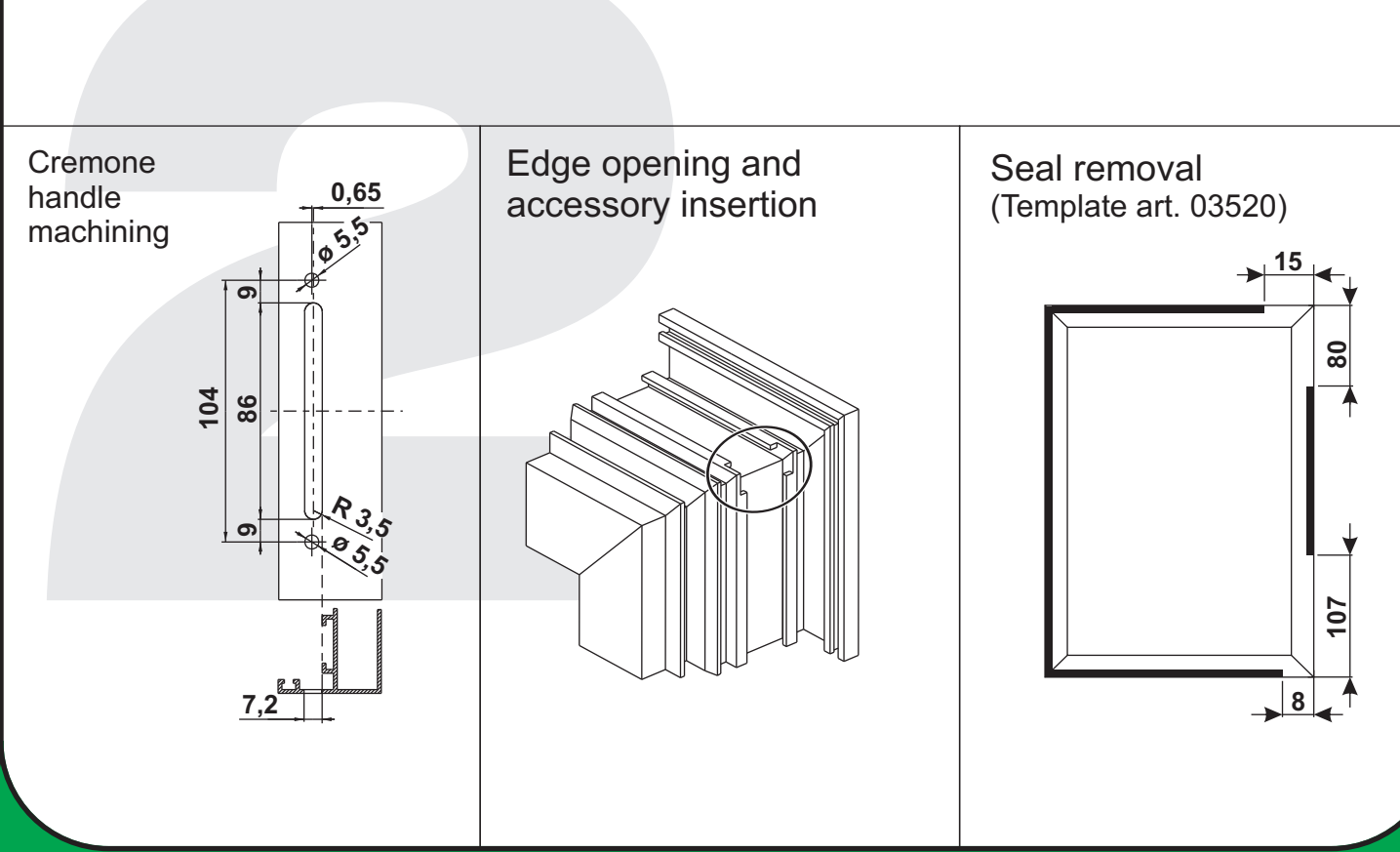
1 Assembly diagram



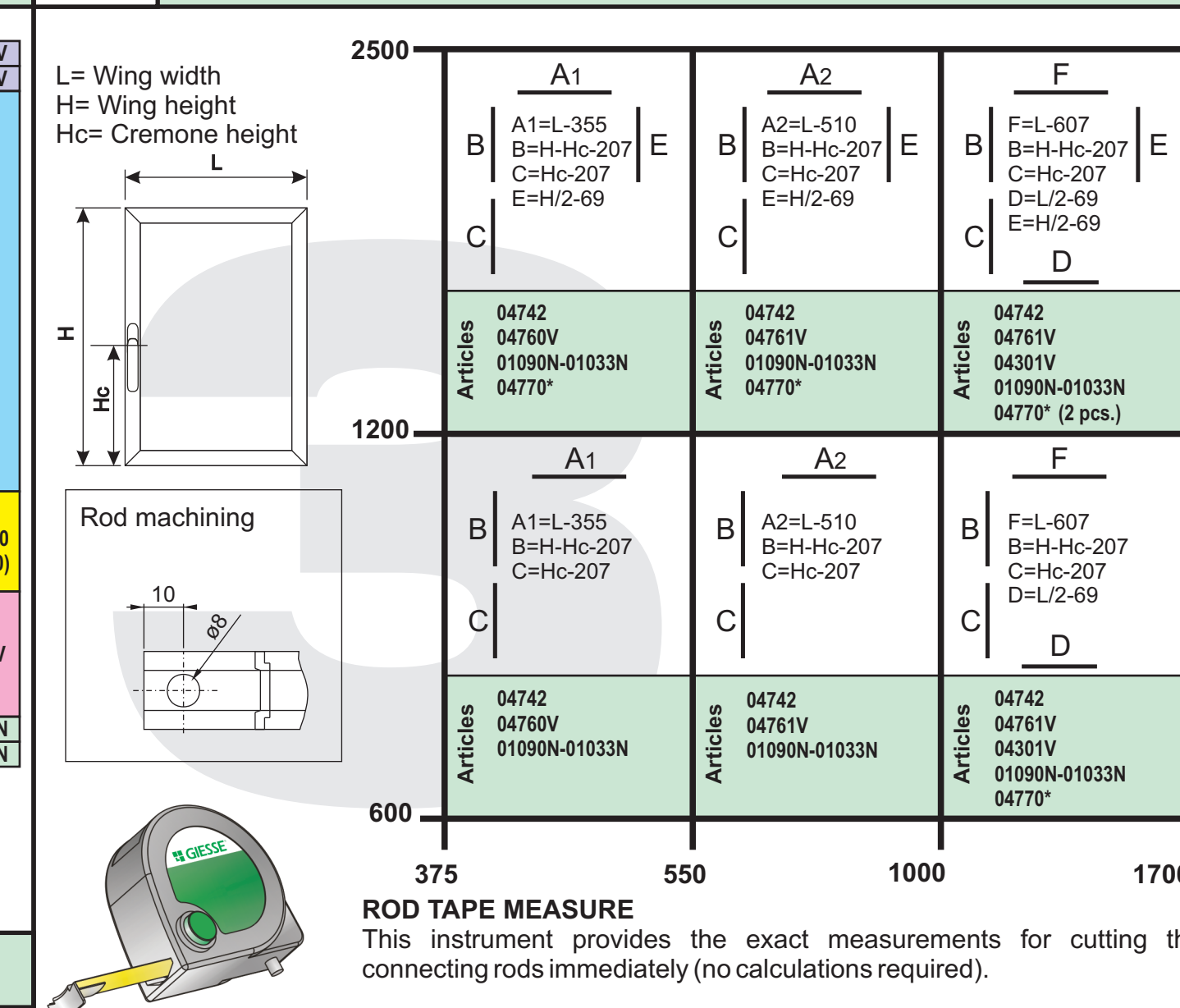
2 Mobile wing machining operations

Preliminary operations on the wing before assembling the **GIESSE Tilt-and-Turn** hardware:

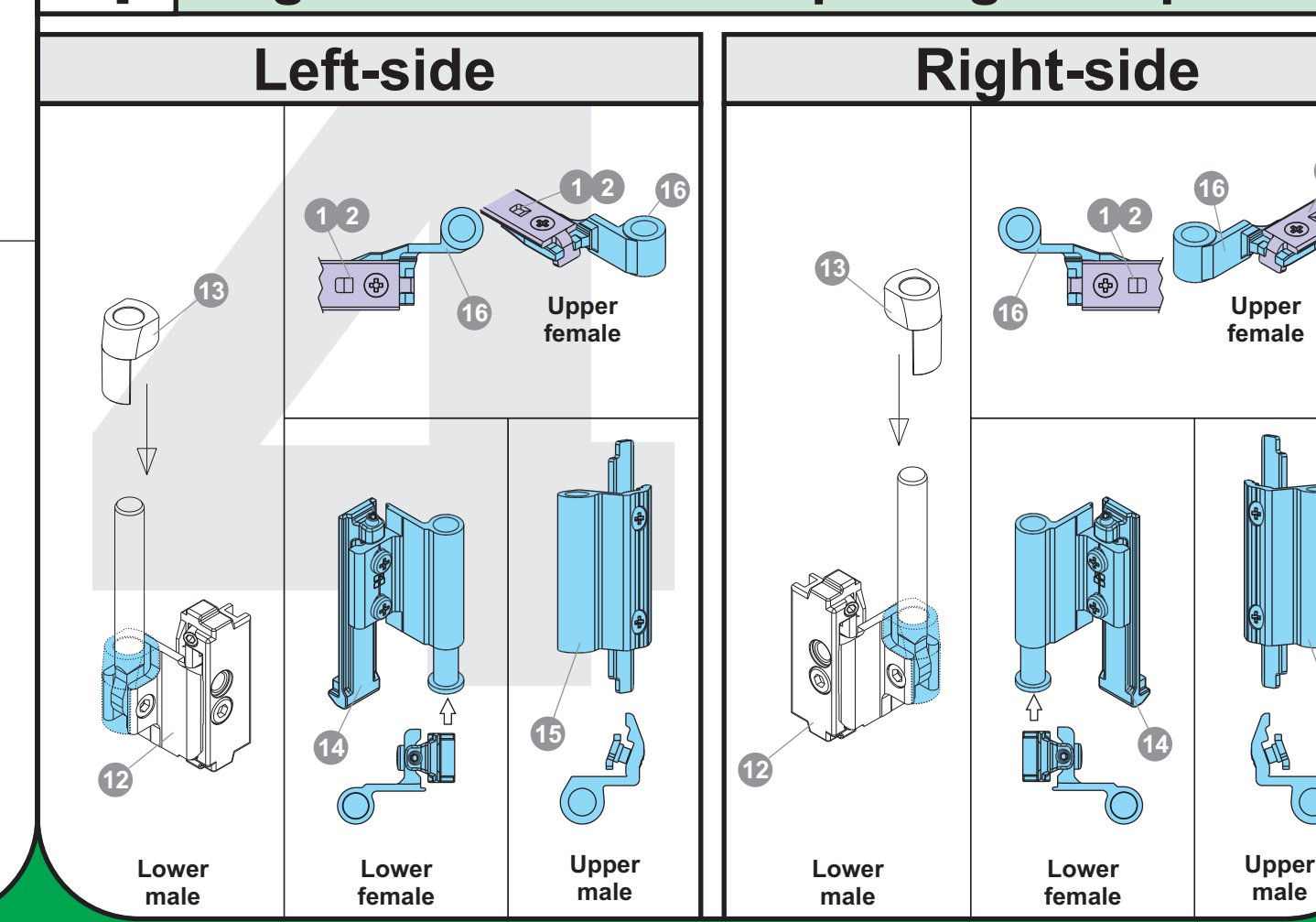
- Cremona machining
- Open edges to insert accessories
- Remove seals to fit hinges



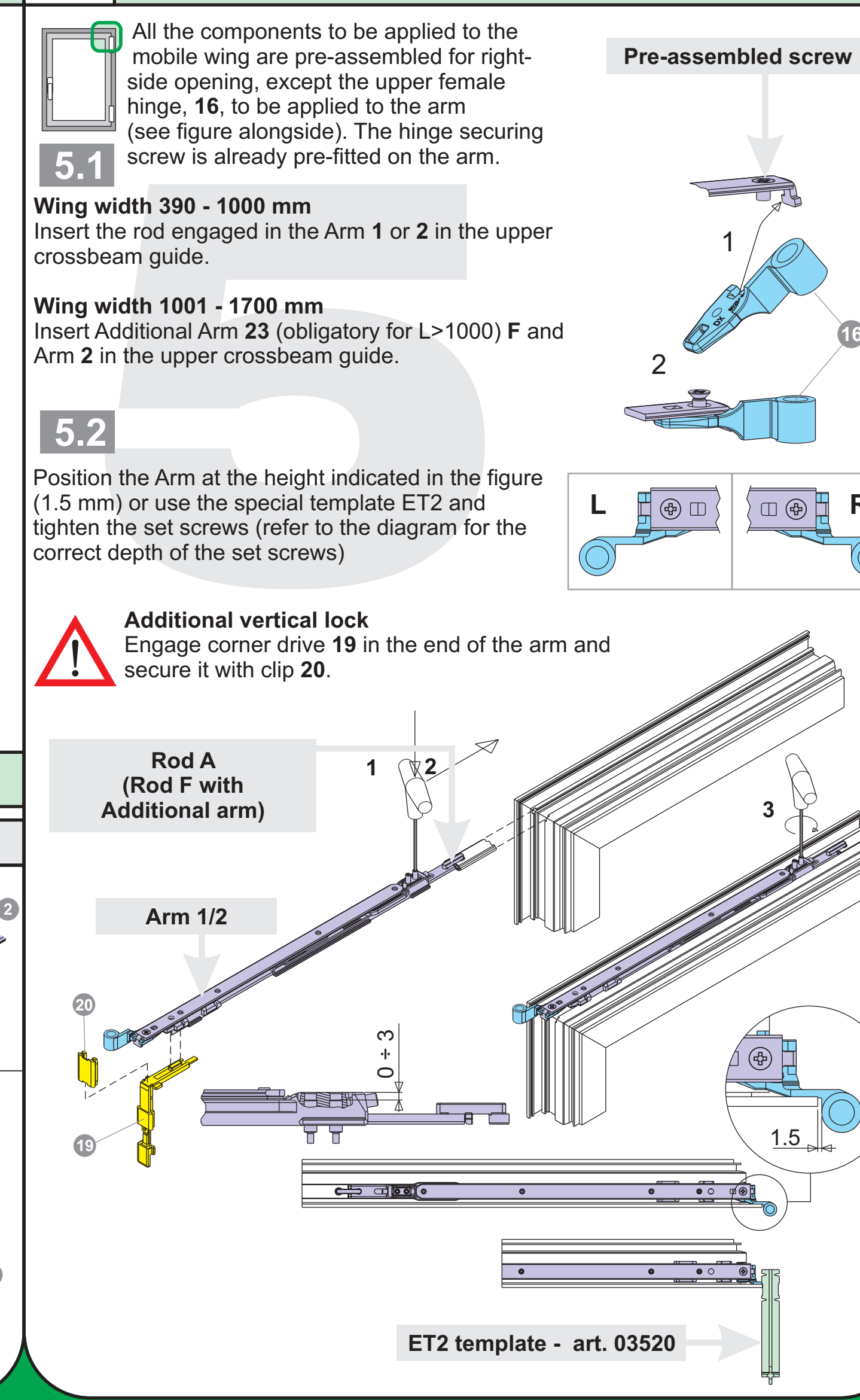
3 Calculating the connecting rods



4 Right-side/Left-side opening set-up



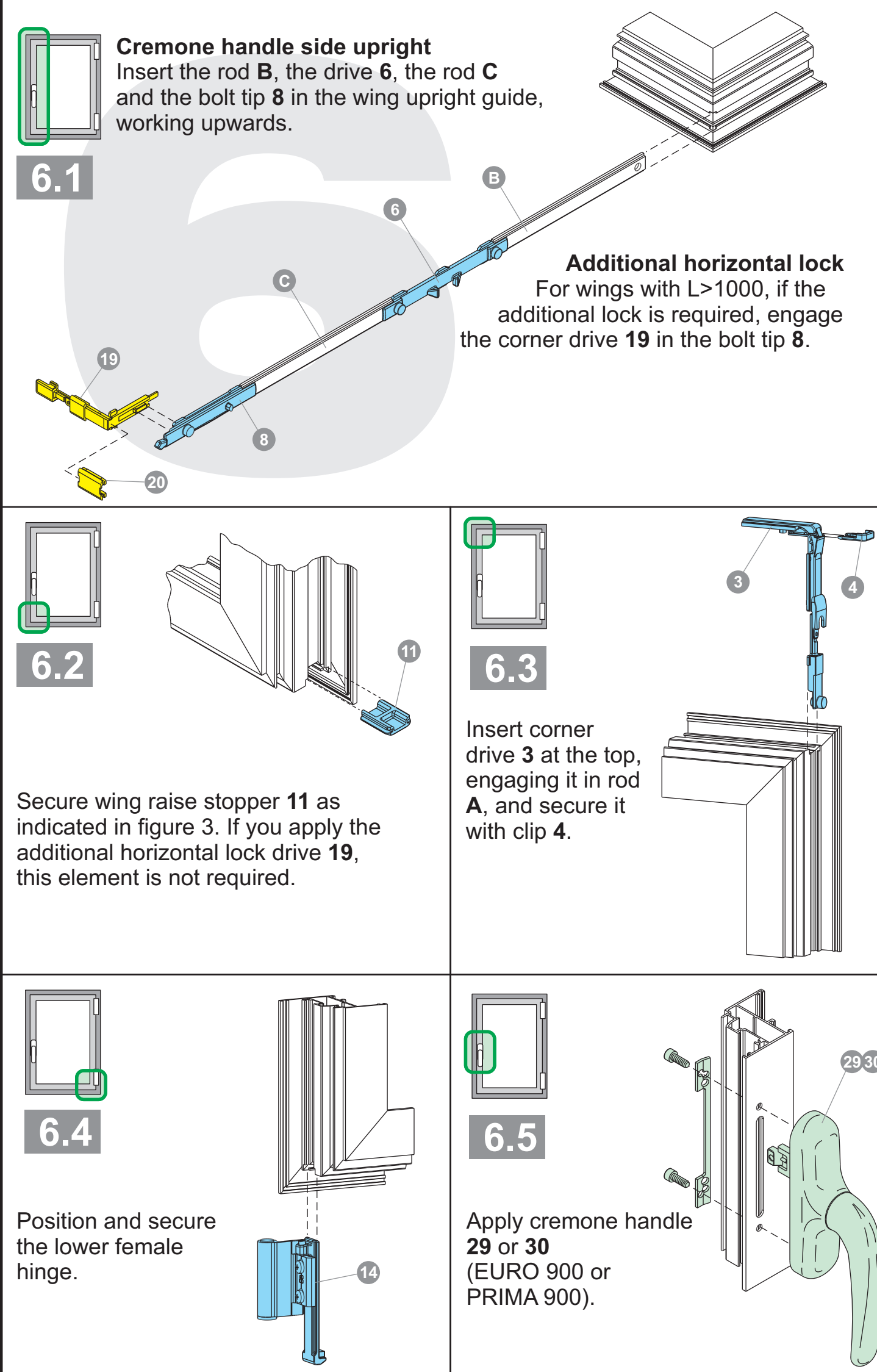
5 Mobile wing



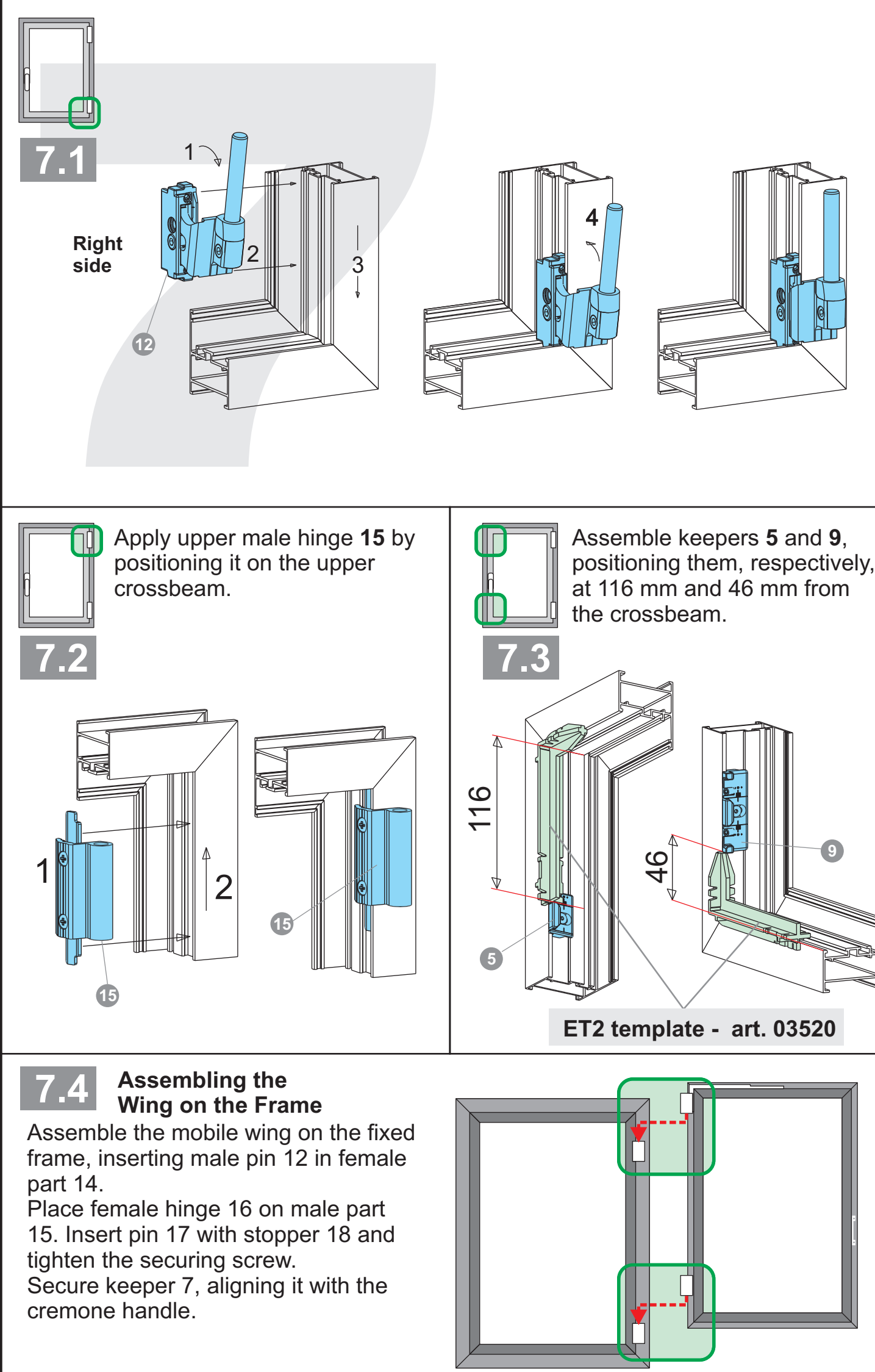
Tilt-and-Turn Products

Description	Article	Uses	20
Base Mechanism	04742	1, 2, 3, 4	20
Arm Type 1	04760V	1, 2, 3, 4	20
Arm Type 2	04761V	1, 2, 3, 4	20
EURO Cremona	01090N	1, 2, 3, 4	5
PRIMA Cremona	01033N	1, 2, 3, 4	5
Inward Opening Double Casement Window Hinges	04774	1, 2, 3, 4	5
GIAP bolt	04274	GACS	10
GIAP bolt	04277	FORMA (Registered Trademark)	10
GIAP bolt	04278	NC	10
INCA bolt	04282	1	5

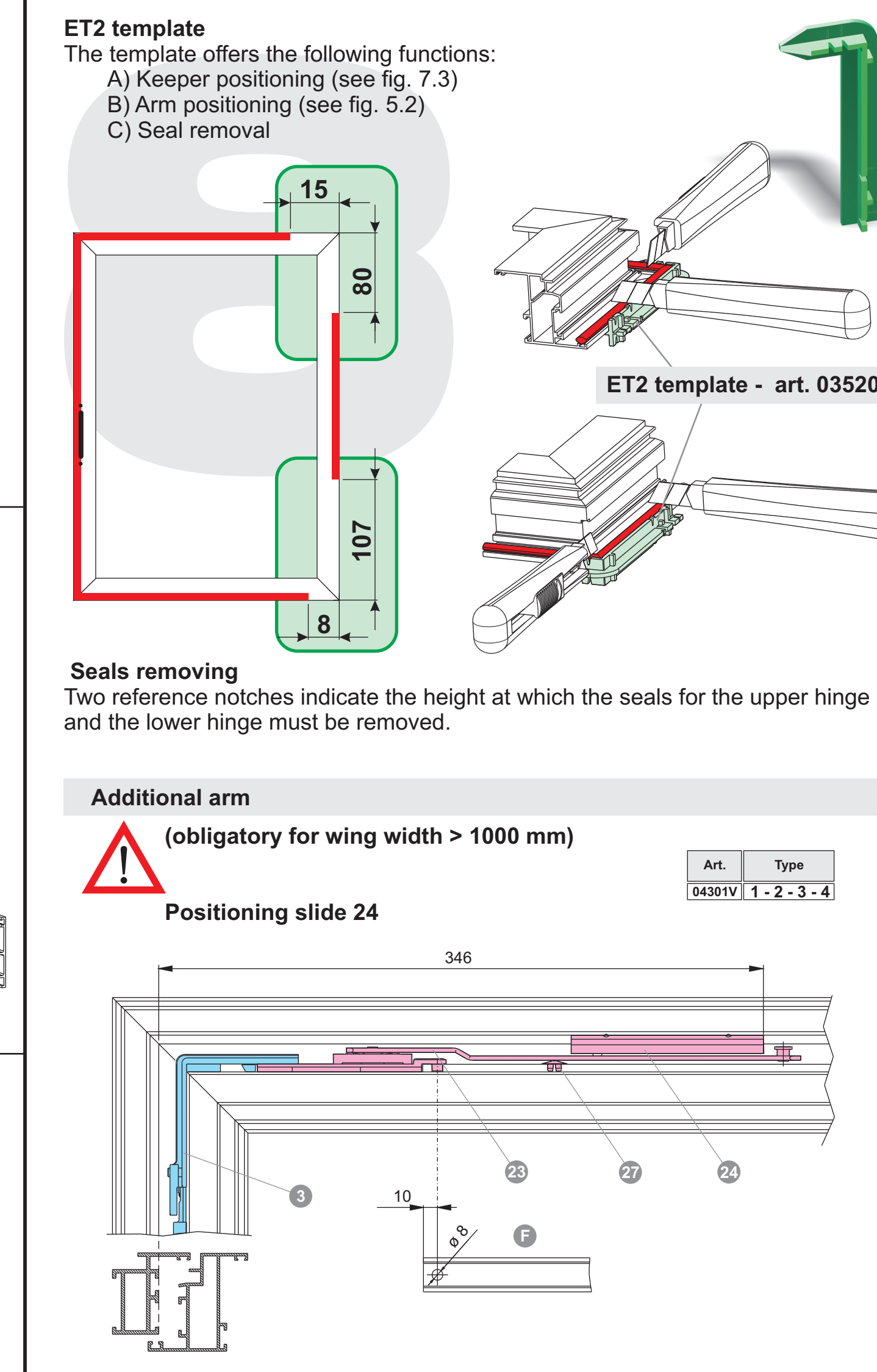
6 Mobile wing



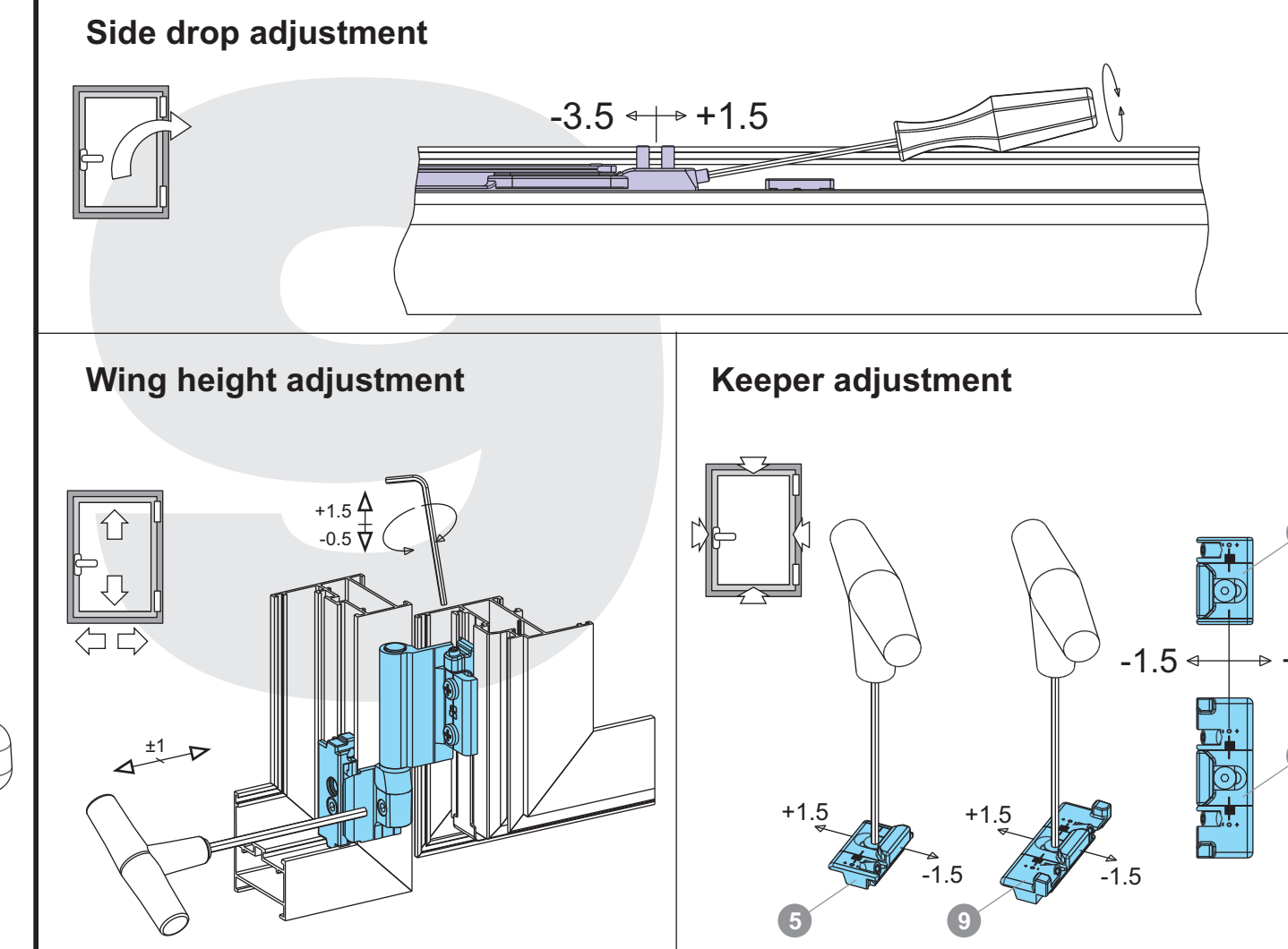
7 Frame



8 Additional accessories



9 Adjustments



10 Installation indications

